

# MONTHLY MEMBERSHIP PROGRESS REPORT

LOCATION PAKISTAN

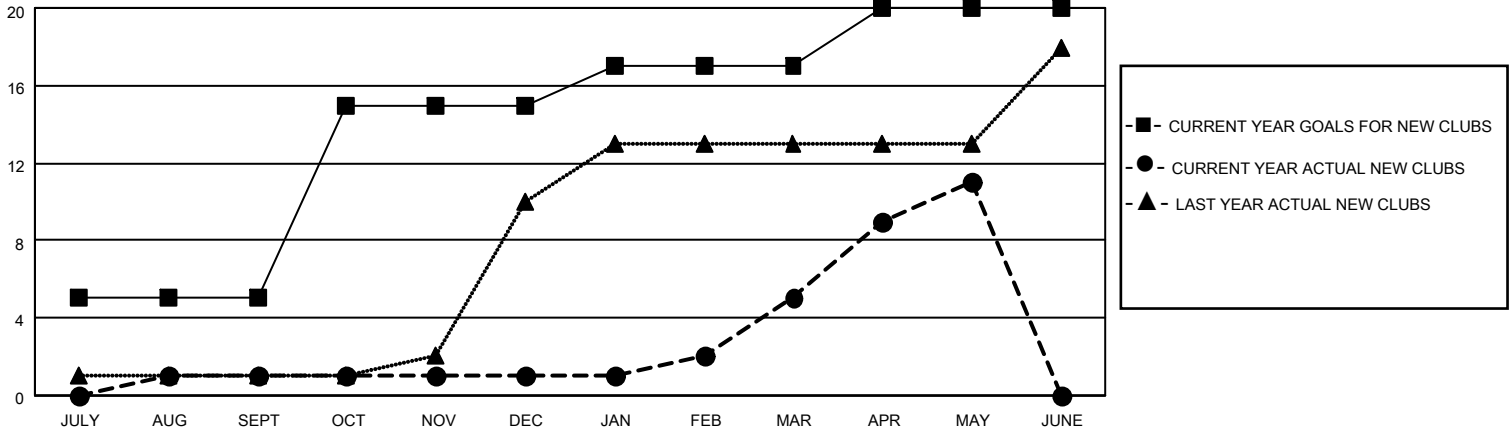
District 305 S

Results as of: 5/31/2022

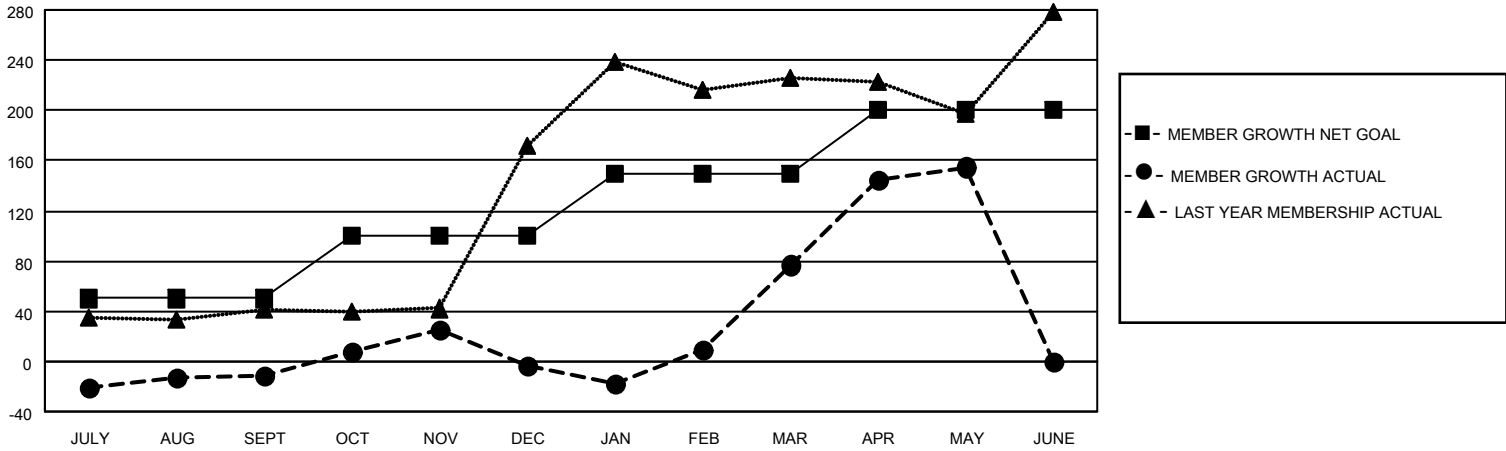
Clubs			
RESULTS FOR 2021-2022			
QUARTER	NEW CLUB GOAL	NEW CLUBS	DROPPED CLUBS
JULY/AUG/SEPT	5	1	3
OCT/NOV/DEC	10	0	1
JAN/FEB/MAR	2	4	1
APR/MAY/JUNE	3	6	0

Members			
RESULTS FOR 2021-2022			
QUARTER	MEMBER GROWTH NET GOAL	MEMBER GROWTH ACTUAL	DROPPED MEMBERS ACTUAL (including transfers)
JULY/AUG/SEPT	50	38	48
OCT/NOV/DEC	50	74	64
JAN/FEB/MAR	50	122	34
APR/MAY/JUNE	50	181	79

**GOALS AND ACTUAL NEW CLUBS CUMULATIVE**



**GOALS AND ACTUAL MEMBERS CUMULATIVE**



**DROPPED CLUBS: 5**

**46 CLUBS OF 111 ADDED 1 OR MORE NEW MEMBERS**

**GENDER DISTRIBUTION**

MALE	1,337 (72.15%)
FEMALE	516 (27.85%)
NON BINARY	0 (0.00%)
PREFER NOT TO ANSWER	0 (0.00%)

**DROPPED MEMBERS**

[CLICK HERE FOR CUMULATIVE MEMBERSHIP DATA](#)

DECEASED	9
CLUB CANCELLED	51
OTHER	165
<b>TOTAL</b>	<b>225</b>

TOTAL FAMILY UNIT MEMBERS 1,433

FAMILY MEMBERS PAYING HALF DUES 1,085